

MARINER SANDS PLAT NO. 4

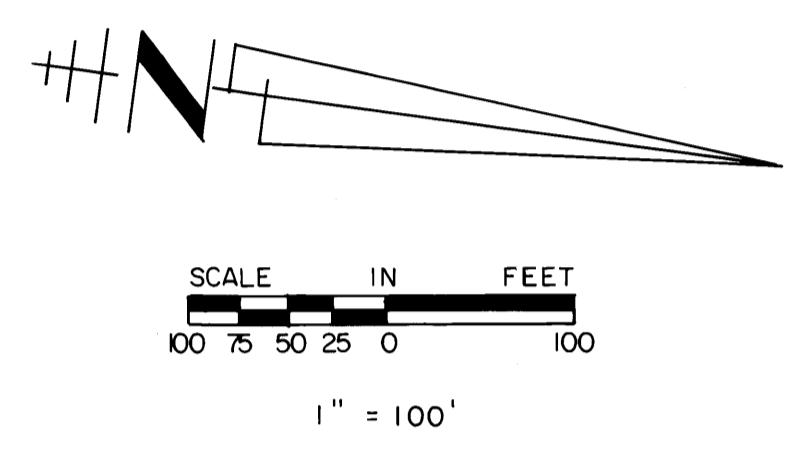
I, Louise V. Isaacs, Clerk of the Circuit Court of Martin County, Florida, hereby certify that this plat was filed for record in Plat Book 9, Page 60, Martin County, Florida, public records, this _____ day of _____, 1984.

LOUISE V. ISAACS, CLERK
CIRCUIT COURT
MARTIN COUNTY, FLORIDA

BY: _____
Deputy Clerk

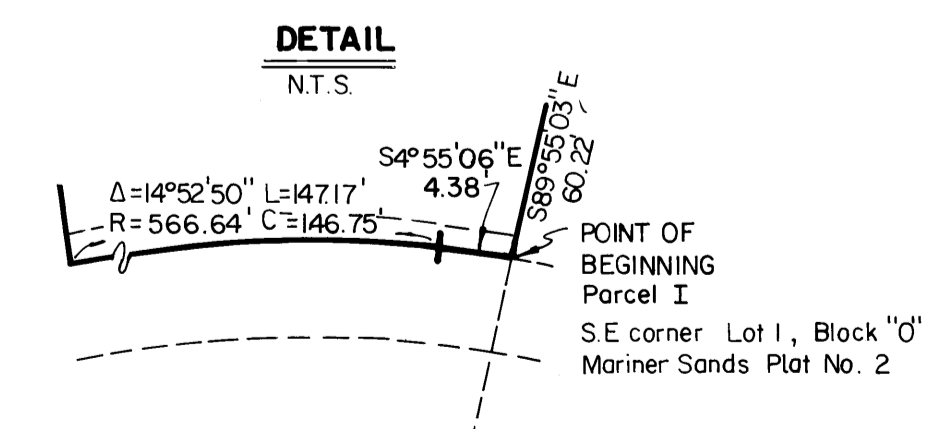
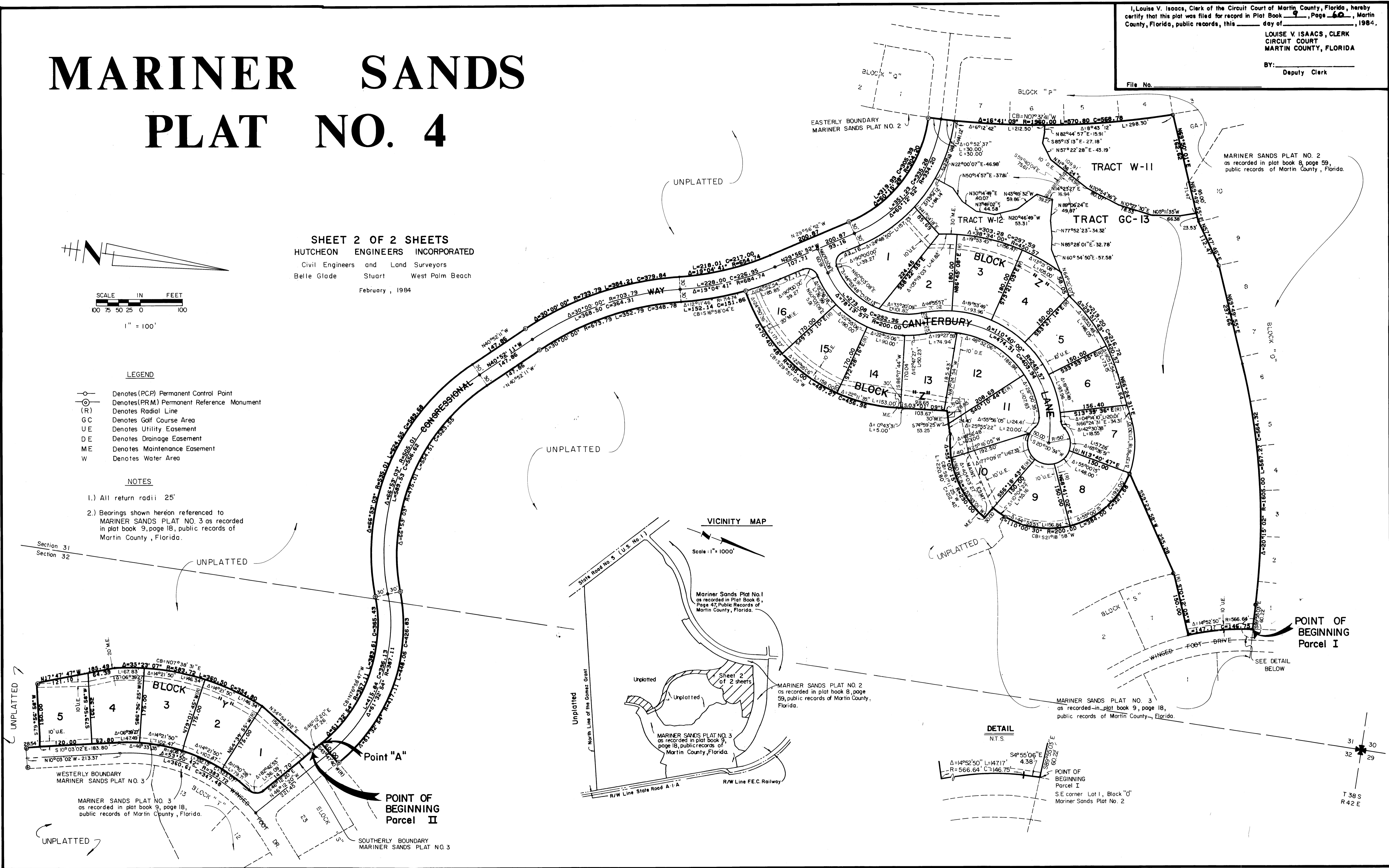
File No. _____

SHEET 2 OF 2 SHEETS
HUTCHEON ENGINEERS INCORPORATED
Civil Engineers and Land Surveyors
Belle Glade Stuart West Palm Beach
February, 1984



- LEGEND**
- Denotes (PCP) Permanent Control Point
 - ⊙ Denotes (PRM) Permanent Reference Monument
 - (R) Denotes Radial Line
 - GC Denotes Golf Course Area
 - UE Denotes Utility Easement
 - DE Denotes Drainage Easement
 - ME Denotes Maintenance Easement
 - W Denotes Water Area

- NOTES**
- 1.) All return radii 25'
 - 2.) Bearings shown hereon referenced to MARINER SANDS PLAT NO. 3 as recorded in plat book 9, page 18, public records of Martin County, Florida.



T 38 S
R 42 E